



Uses only CONTOUR[®]NEXT blood glucose test strips



MiniMed[™] 670G pump is shown

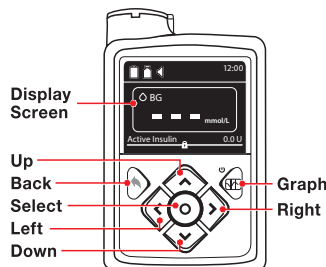


ASCENSIA
Diabetes Care

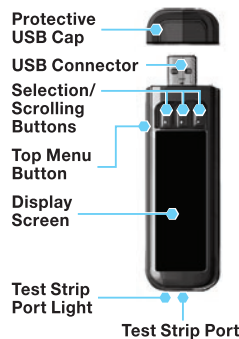
Medtronic

Wireless Connection Set-Up Instructions

MiniMed[™] 670G Pump



Meter



NOTE: Check the units of measure of your meter. See your meter user guide for complete instructions.

Connecting the CONTOUR[®]NEXT LINK 2.4 Meter to the MiniMed[™] 670G Insulin Pump

Charging Meter

- 1** Remove the USB cap to reveal the USB connector.



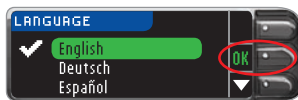
The CONTOUR NEXT LINK 2.4 meter has a permanent rechargeable battery. Charge your meter with the wall charger or by plugging the USB connector into a computer. Be sure the computer is turned on. Your meter will briefly display "Do Not Test-Charging" and the test strip port light will flash. **You cannot do a blood glucose test while the battery is charging.** When charging is finished, the test strip port light will turn off. Unplug your CONTOUR NEXT LINK 2.4 meter to test.

Unplug Meter From Charging Source Before Beginning Setup

- 2** To begin setup, hold down the top Menu button for several seconds until the meter turns on.



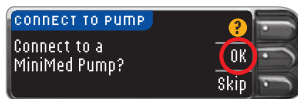
- 3** Scroll down to select your language. Press **OK**.



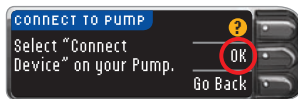
- 4** Press **OK** if the correct language is displayed. Press **NO** if the incorrect language is displayed.

Connect to Pump

- 5** Connect to a MiniMed Pump? Press **OK**.



- 6** Press **OK**. Put the meter down and pick up your pump.

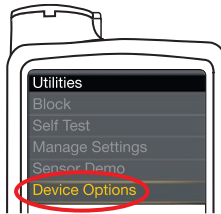


- 7** Press the **Select** button. Use the **Down** arrow button to scroll to **Options**. Press **Select** button.



If pump screen goes blank, press any button to turn it back on.

- 8** Press the Down arrow button to scroll to **Utilities**. Press **Select** button. In the Utilities menu, use the down arrow to scroll to **Device Options**. Press the **Select** button.



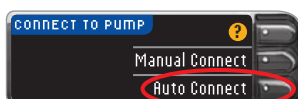
- 9** In the Device Options menu, scroll to **Connect Device**. Press the **Select** button.



- 10** Place the meter and pump next to each other. Select **Auto Connect** on your pump.

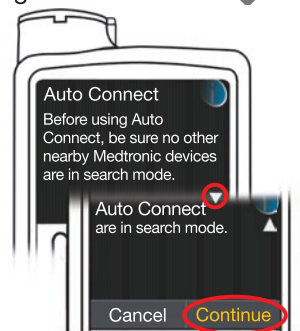


Select **Auto Connect** on your meter.



- 11** Read the pump screen, using the down arrow to scroll to the next page.

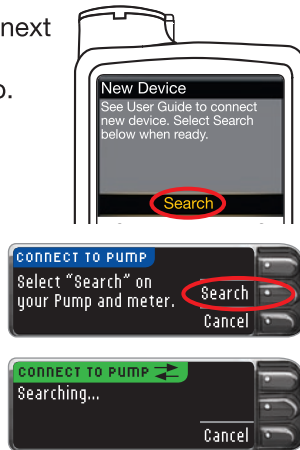
Use the arrow buttons to scroll to **Continue**. Press the **Select** button.



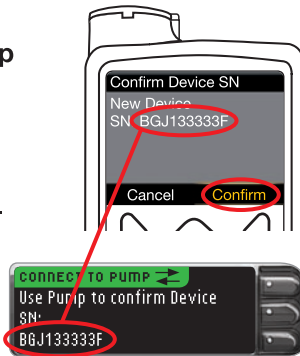
- 12** Place the meter and pump next to each other. Select **Search** on the pump.

Select **Search** on the meter.

The search may take up to 2 minutes.



- 13** Check to see if Device SN (serial number) on the pump matches the Device SN on the meter. If they match, scroll to **Confirm** on the pump. Press the **Select** button.



When the pump links to the meter, the SN on the meter screen will change to a different serial number. This number is the pump SN.

- 14** Turn the pump over. Make sure that the SN on the back of the pump matches the pump serial number now on the meter screen. Press **Next**.



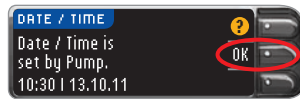
- 15** Select **Always** and press **OK** on next screen.



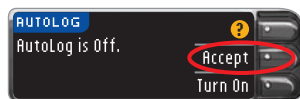
- 16** Select the **Date Format**.



- 17** Press **OK**. Note: If time and date are incorrect, you must change them on the pump.



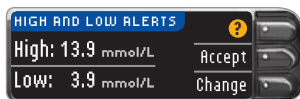
- 18** Press **Accept** to select **AutoLog is Off**. AutoLog allows you to mark a test result as *Fasting, Before Meal, or After Meal*. See your user guide to learn more.



Turn the page over to complete setup. →

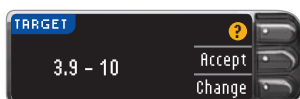
19 Accept or Change High and Low Alerts.

The meter alerts you with a sound when your blood sugar level is above or below your set levels.



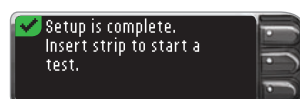
20 Accept or Change your Target range.

The Target range is your goal for your blood sugar test results.



NOTE: Alerts can only be set outside your selected Target Range(s). Targets can only be set inside your selected Alert level(s). For additional information, you may contact Customer Service. See contact information for Customer Service below.

21 Your system setup is now complete and ready to run a blood sugar test.



See your CONTOUR NEXT LINK 2.4 user guide, lancing device insert and MiniMed insulin pump user guide for full instructions.

If you need assistance or have questions about blood sugar testing, please contact Ascensia Diabetes Support at 0345 600 6030 – UK, 1 890 920 111 – IE. See Customer Service Hours of Operation by visiting www.diabetes.ascensia.com

IVD For In Vitro Diagnostic Use.

Ascensia Diabetes Care UK Ltd
Ascensia House
Albert Road
Newbury, Berkshire
RG14 1DL UK
Ascensia Diabetes Support
0345 600 6030 – UK

Ascensia Diabetes Care Ireland Ltd
10 Earlsfort Terrace
Dublin 2
D02 T380
Ireland
Ascensia Diabetes Support
1 890 920 111 – IE

 Ascensia Diabetes Care Holdings AG
Peter Merian-Strasse 90
4052 Basel, Switzerland


0088

 **ASCENSIA**
Diabetes Care

Medtronic

For information on patents, and related licenses, see:
www.patents.ascensia.com

Ascensia, the Ascensia Diabetes Care logo, Clinilog, Contour, Glucofacts, and the No Coding logo are trademarks and/or registered trademarks of Ascensia Diabetes Care Holdings AG.

Medtronic, the Medtronic logo, and MiniMed are trademarks of Medtronic.
© 2018 Ascensia Diabetes Care Holdings AG. All rights reserved.